

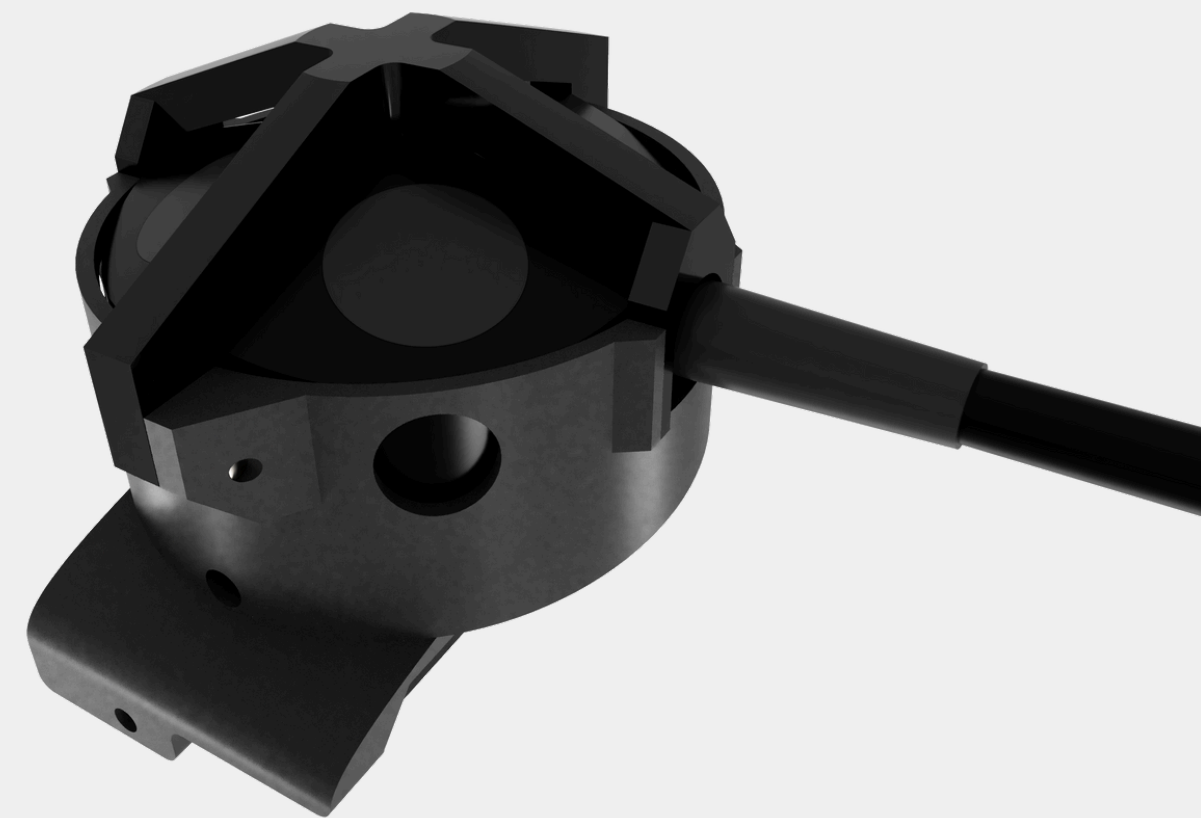
# DVL

The DVL is the cornerstone that allows **EXRAY™** to achieve full autonomy.

Provided by Water Linked, the DVL calculates velocity relative to the seafloor by emitting acoustic waves from its four angled transducers and measuring the frequency shift (Doppler effect) of the returning echoes.

By eliminating the need for topside communication, the DVL serves as a navigation sensor for **EXRAY™**, ensuring seamless stability and control during its operations.

The DVL is fully integrated with **NAVIA™** without the need of an external system.



## SYSTEM SPECIFICATIONS

Dimensions (Ø x H)	Ø 66 x 25 mm (Ø 2.56 x 1.38 in)
Weight in Air	170 g (6 oz)
Depth Rating	300 m (984 ft)
Power Consumption	4 W (Average)

## ACOUSTIC SPECIFICATIONS

Transducer Frequency	1 MHz
Ping Rate	4 - 15 Hz (adaptive to altitude)
Minimum Altitude	50 mm (1.97 in)
Maximum Altitude	50 m (165 ft)
Maximum Velocity	3.75 m/s
Long Term Accuracy	<b>Standard Version:</b> ±1.01 %  <b>Performance Version:</b> ±0.1 %

