

# EXRAY™ ROV

## For professional underwater inspection jobs

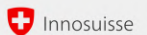
EXRAY™ is a Swiss-made professional underwater inspection robot specifically developed for detailed inspections of submerged assets.

Slim, agile, smart, and highly modular, it is an excellent tool for tough underwater inspection missions. Weighing a just under **10kg/22lbs** and having a slim profile of just **13,4cm/5 1/4" in height**, this robot is a powerhouse.

Equipped with **8 patented hubless thrusters** that allow for extra-precise control, it offers **6 degrees of freedom** maneuverability.

The EXRAY™ can operate for up to **4 hours on a single battery** charge. With a **built-in 4K camera**, **sonar sensors** and compatibility with a growing range of payloads, the EXRAY™ is your ultimate top performing ROV for challenging underwater inspection tasks.

Class certified (DNV, ABS, more in process).



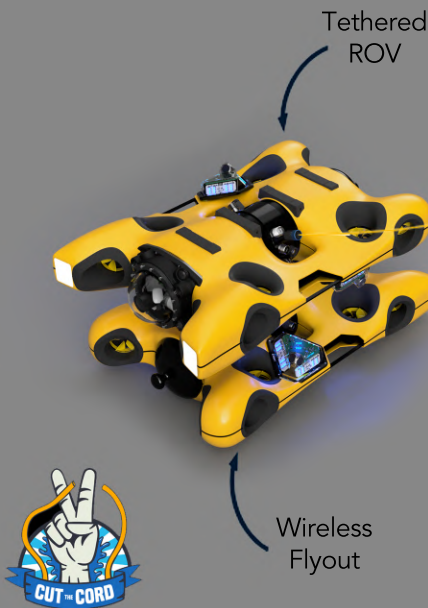
## With a fully wireless flyout

Breaking new ground in the realm of mini-ROVs, the EXRAY™ offers an extension option with a flyout robot. This detachable companion can be fully controlled remotely, complete with live HD video streaming, eliminating the risk of entanglement in confined flooded spaces.

The topside control station enables the pilot to place the tethered ROV in station-keeping mode, where it acts as a communication relay for the flyout as well as a third eye providing an additional perspective.

With a quick manual switch, the pilot can effortlessly alternate between the tethered and untethered robot. The flyout can be equipped with a metal thickness probe featuring A-scan functionality and is capable of hosting a variety of other payloads, just like its tethered twin.

To operate the flyout wirelessly, Hydromea has developed a proprietary wireless communication system that utilizes blue light for data transmission. Blue light enables the wireless range of up to 30 meters (100ft) in confined flooded spaces in addition to the tether length of the relay ROV.



## The company

Hydromea is a Swiss-based company focusing on miniaturization and automation of underwater robotics solutions for the operators of submerged assets.

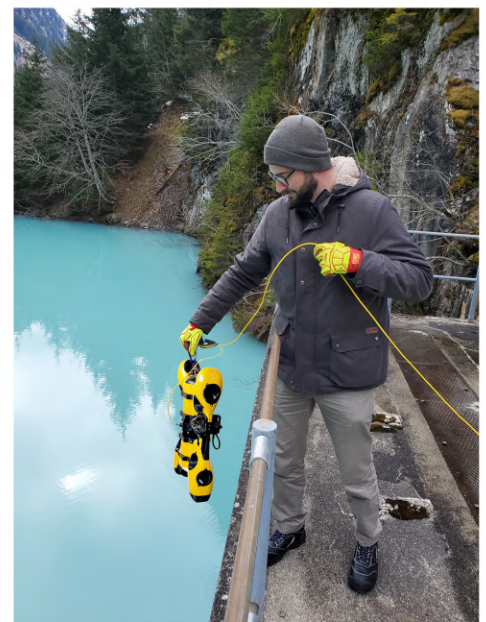
Having its roots in developing swarm-capable mini-AUVs (autonomous underwater vehicles), the company has deep expertise and significant IP in smart miniature construction of robust inspection robots, high-bandwidth underwater wireless communication technology, hubless ultra-thin thrusters, distributed networking, autonomy features and many other cutting-edge features that differentiates its inspection robotic solution from other alternatives in the market.

Hydromea leads the development of the wireless communication industry standard in free-space optical communication as part of the SWiG (Subsea Wireless Group).



Avenue de Longemalle 11  
1020 Renens, Switzerland

sales@hydromea.com



HYDROMEAE

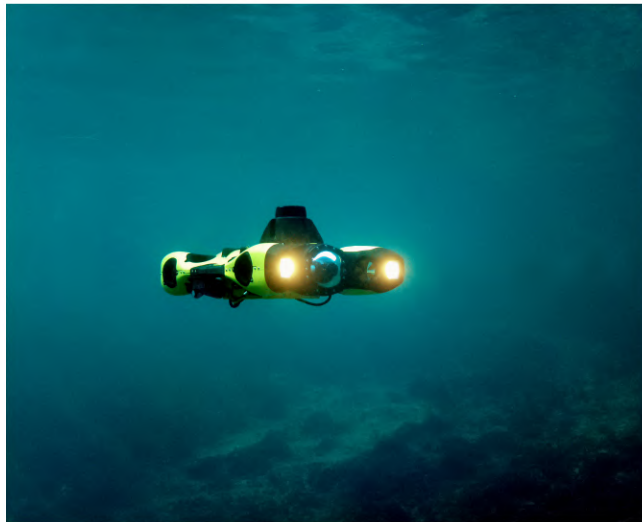


# EXRAY™ ROV

## Applications

EXRAY™ ROV can be used with or without a wireless flyout in many underwater inspection jobs onshore and offshore, such as:

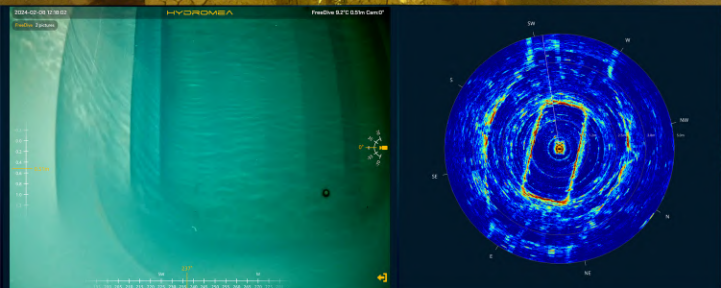
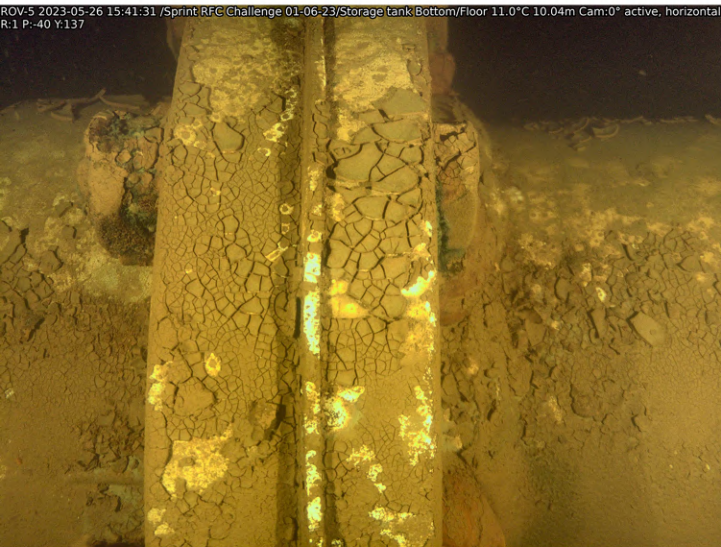
- Tanks: water storage, potable water, ballast water
- Cooling towers
- Nuclear pools
- Hydropower infrastructure and turbine runner blades
- Offshore: complex asset inspections such as jackets and caissons



## Key features

- Wireless ROV flyout for confined spaces removes the risk of tether tangling and significantly increases inspection speeds
- 6 DoF in an extremely small form factor to enter the most complex infrastructure
- Sharp 4K still images with FHD video and a powerful onboard computer to collect, distribute and analyze asset condition data like never before
- Versatile modular payload connector for the integration of a multitude of sensors
- Large pilot station with an optional inspector station that can be used by an NDT CSWIP 3.3/3.4 ROV inspector
- Intuitive and highly responsive control
- Semi-autonomous features for ease of operation, such as automatic vertical pitch, position-hold for UT measurements
- Digital workbook organizer for proper mission reporting
- Optionally integrated SPEERA™ vacuum cleaner for sediment removal in tanks

ROV-5 2023-05-26 15:41:31 /Sprint RFC/Challenge 01-06-23/Storage tank/Bottom/Floor 11.0°C 10.04m Cam:0° active, horizontal R:1 P:-40 Y:137



Avenue de Longemalle 11  
1020 Renens, Switzerland

sales@hydromea.com

HYDROME A